

PART OF S.W. 1/4 OF SEC. 21 & S.E. 1/4 OF SEC. 20, T.7N., R.1W., S.L.B. & M.

125

LAKEVIEW HEIGHTS SUBDIVISION—PHASE 3A

P.R.U.D.

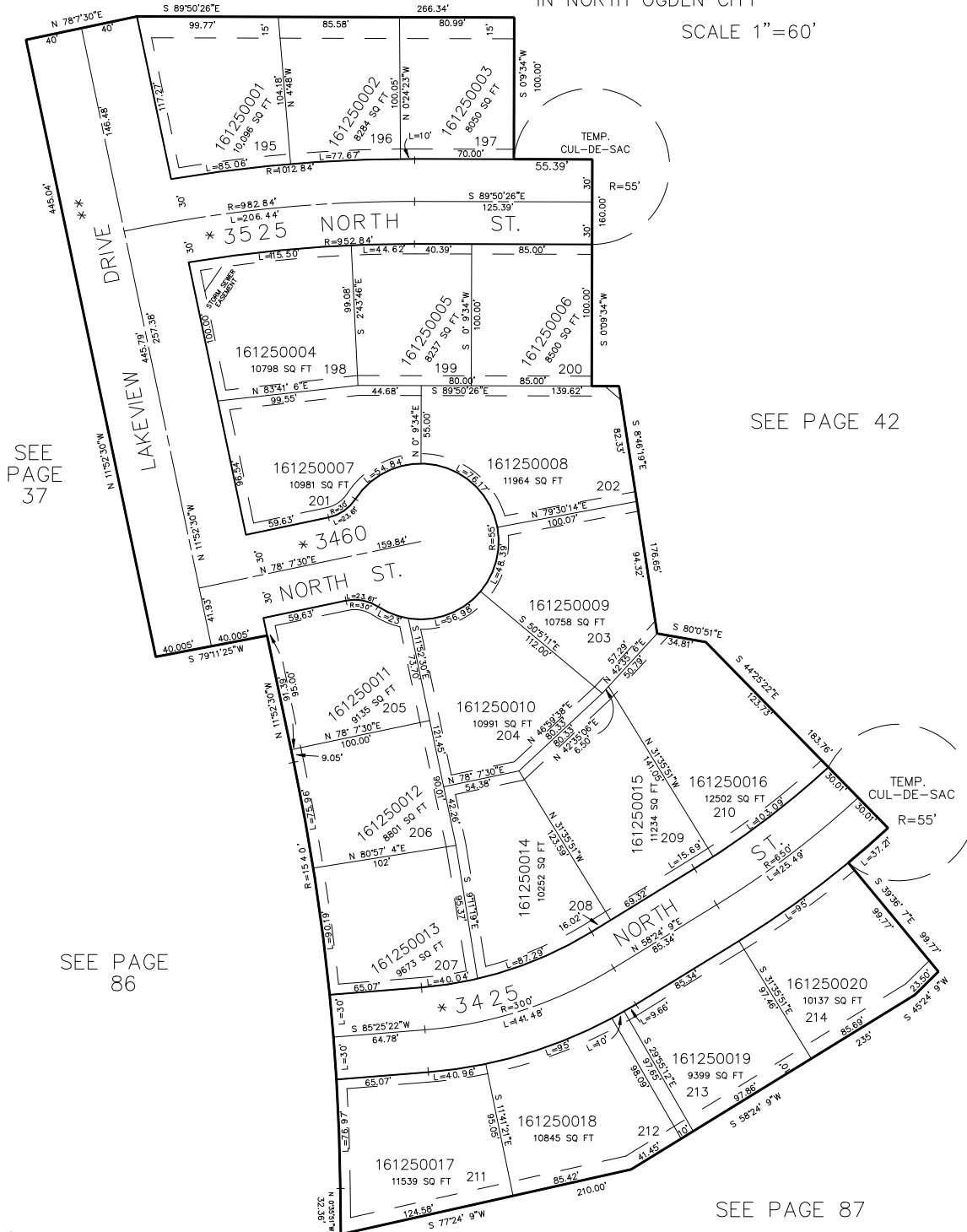
LOTS 195 TO 214

IN NORTH OGDEN CITY

SCALE 1"=60'

TAXING UNIT: 10

SEE PAGE 42



7" UTILITY AND DRAINAGE EASEMENTS
EACH SIDE OF PROPERTY LINE AS
INDICATED BY DASHED LINES OR
AS OTHERWISE SHOWN.

FOR COMPLETE ENG. DATA SEE
ORIGINAL DEDICATION PLAT IN
BOOK 29, PAGE 40 OF RECORDS.

* STREET NAME CHANGE
1554-710

** STREET NAME CHANGE
ORDINANCE #1389188
1792-1931 21-FEB-96